



## MEx Mobile Exchange

Map supported mobile meter readout

### Our strength: Your benefit

- GIS map supported readout of different meters:  
**Optimized meter readout and overview**
- Complete integration into the existing IT environment:  
**Direct data transfer to the billing system – no manual data transfer required**
- Automatic consumption verification (plausibility check) at the time of reading:  
**Deviations can be clarified on site**

### Application

- «Manual» readout and «Drive-by» radio readout of water, gas, electric and heat meters
- For mobile radio readout of hard to access meter locations, e.g. pits, with support of exact map location
- Integrated meter exchange process in the field. Meter number and meter reading are sent directly to the responsible body.

### Features

- Meter readings are attributed automatically to the customer during readout and are then transferred automatically and directly to the billing system. No manual processing required.
- In combination with a wall or radio module, it is possible to read out the GWF-coder® register readings without having direct access to the meter
- Continuous data chain – no manual transfer of readings necessary
- Cost effective radio readout – more than 250 meters in 30 minutes with map overview

### MEx Mobile Exchange

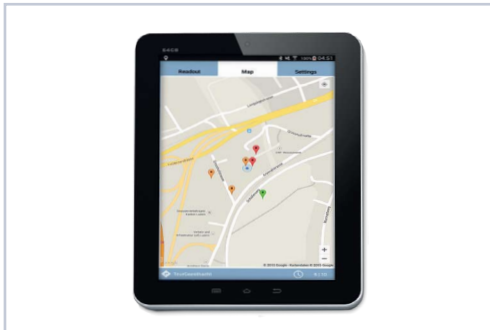
With the help of MEx Mobile Exchange, a mobile readout system, meters are accounted for reliably and efficiently. The relevant customer data is taken over by MEx Mobile Exchange simply from the billing system and written back after the read-out of the meters has taken place.

With a user friendly interface, the software is easy to use and after only a short introduction can be used effectively. MEx Mobile Exchange was conceived particularly for smaller and middle sized utilities.

### Components

#### MEx Office – Tour management

The MEx Office software is part of MEx and is used as hub between the billing system and the reading device. The integrated import/export functions make simple, fast and safe data exchange possible with different billing systems. Furthermore, MEx Office supports and simplifies the management of the tours and readout devices. The contents of the meter data can be examined before exporting it to the billing software. Additionally the readout data can be exported for example in to a Microsoft® Excel file for the maintenance of meters.



MEx Tablet  
(map view)



Radio receiver MBW BLUE

### MEx Tablet – Manual readout

The mobile device shows all meter locations on the GIS map and meter readings can be attributed easily manually. Meters that have already been read out are hidden on the map. This way, the map always provides the reading technician with an overview of the addresses where meters still need to be read out due to the absence of the customers.

### MEx Tablet – Radio readout

Readers with radio can be read out efficiently in «Drive-by» mode. The mobile device is connected with the mobile radio receiver via Bluetooth. Meter readings are attributed to the meter on receipt. The meters that have already been read out are automatically hidden on the map. This way, the map always provides the reading technician with an overview of the addresses where meters still need to be read out.

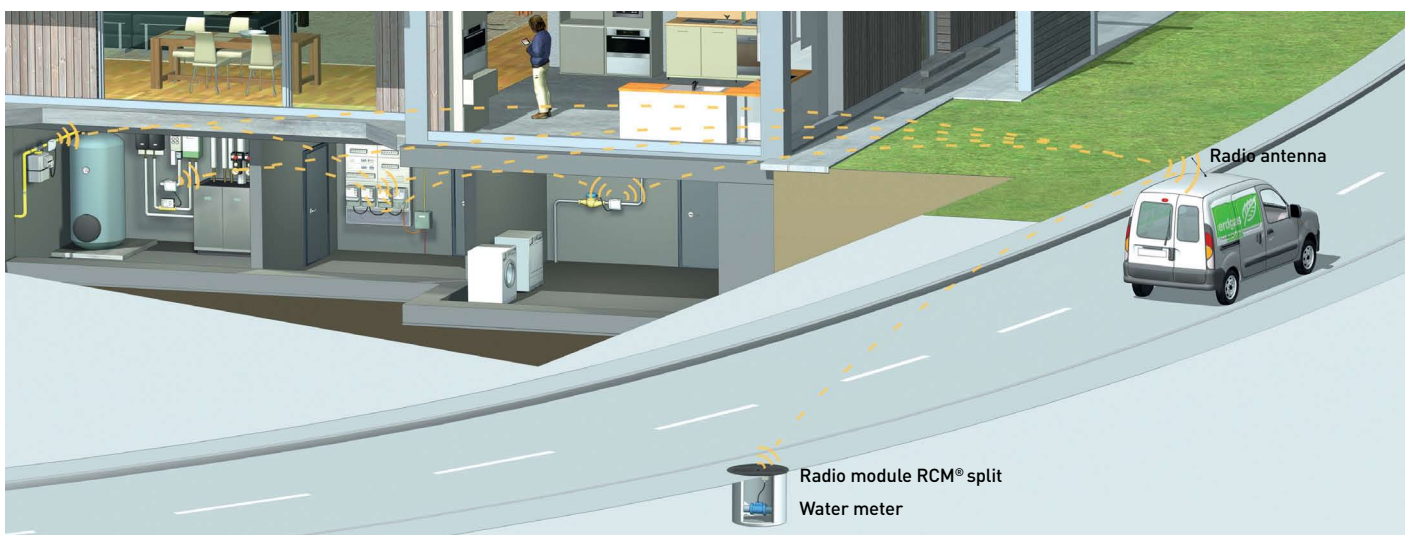
### Tablet – Meter exchange

MEx supports the meter exchange process directly in the field. Meter numbers and meter readings are transferred directly to the mobile device, collected and sent by email to the billing system or the person responsible by simply pressing a button. The exchange data are always available and accessible in MEx Office.

### MEx Office – Reading point

Readout and meter exchange data are managed automatically by MEx Office during all readout periods and are always accessible for service and plausibility check. In the archive, the original tours and meter exchanges are stored permanently.

## Applications



### MEx Exchange – «Hard to read meters» read easily

Hard to access meters for example in houses, flats or shafts can be read with a minimum of effort. The added advantages of safety reliability and speed of reading are obvious advantages.

#### Note:

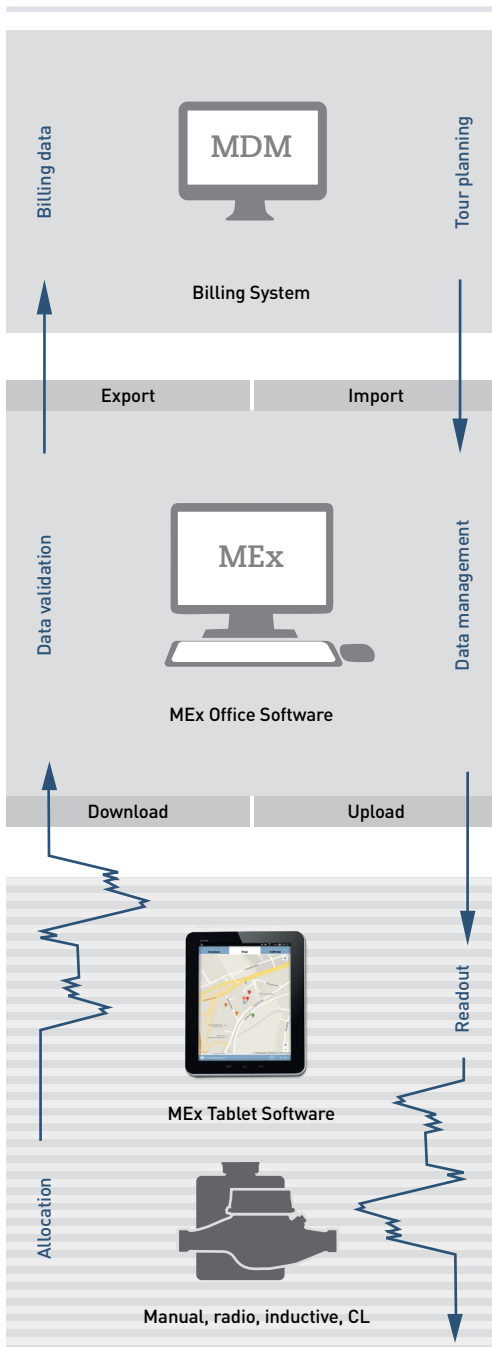
GWF offers specifically for pit meter readings an innovative flood proof IP68 solution – both Encoder meter register and radio module can be submerged under water without damaging the modules.



# MÄTARKONTROLL



## Data Chain



## Technical Data

### MEx Tablet readout software

Features	<ul style="list-style-type: none"> <li>GIS map supported route readout</li> <li>Search- and filter function</li> <li>Route status interface – Route progress graphical status</li> <li>Random read – Intermediate readings</li> <li>Automatic saving of meter data</li> <li>Backup-Function on SD-memory card</li> <li>Microsoft® Excel export (CSV) for evaluation and maintenance</li> </ul>
Readout types	<ul style="list-style-type: none"> <li>Manual readout</li> <li>Radio readout</li> <li>Inductive readout CAB-05/04</li> <li>Interface CL(CS) CAB-05/04</li> <li>Administration of up to 20 readout devices, and 50 routes (max. 500 meters per route)</li> </ul>
Languages	<ul style="list-style-type: none"> <li>German</li> <li>French</li> <li>English</li> <li>Italian</li> </ul>
Billing data Export/Import	Interfacce: XML, CSV, TAB, SAP other formats on request

### MEx Office data (Web hosting)

System	<ul style="list-style-type: none"> <li>Data centre – Lucerne/Switzerland</li> <li>GEO redundancy</li> <li>Managed Firewall</li> <li>Managed vServer</li> <li>Data transfer HTTPS</li> <li>Encrypted data exchange</li> <li>Web browser (current version)</li> </ul>
--------	---

### MEx Office data exchange (On-Premise)

System	<ul style="list-style-type: none"> <li>Linux</li> <li>Web server</li> <li>Data base server</li> <li>VM ware (recommended)</li> <li>Web browser (current version)</li> </ul>
--------	---

### MEx Tablet – Mobile readout device

System	<ul style="list-style-type: none"> <li>Mobile phone (smartphone) or tablet</li> <li>Operation system Android &gt;4.4</li> <li>Display size ≥5 inches</li> <li>GPS function</li> <li>SD-Memory card – Data backup</li> <li>Bluetooth</li> </ul>
--------	--