



MÄTARKONTROLL

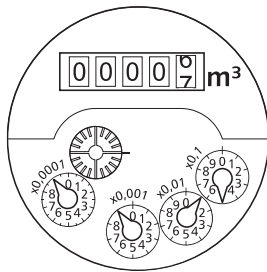


MNK / MNK-N / MNKI-N

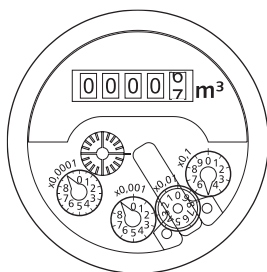
Multi-jet wet dial meters for cold water

The multi-jet wet dial meter MNK is an ideal domestic water meter for tamper-proof, high-precision consumption measurement. MNK is an MID compliant water meter, proven by the million, for service connection. Continuous further development guarantees the most precise measurement results and the best long-term stability. Its construction, thought out right down to the last detail, guarantees outstanding performance characteristics, minimum bearing loads and a long service life for the MNK water meter.

The MNK is available with an uncoated brass body as a standard (optionally with a powder-coated brass body). Version MNK-N is retrofittable with pulser (reed) for remote readout.



MNK



MNK-N

Performance characteristics

- Wet dial register construction
- High-quality mineral glass inspection window
- Optional: UV-resistant plastic (MNK-N)
- Operating pressure MAP 16
- Display range from 0.1 l to 99999 cubic meters
- Approved in accordance with MID

Applications

- For the consumption measuring of cold potable water up to 50° C
- Water meter for horizontal and vertical installation

AMR options

- Retrofittable with pulser
(Standard pulse value 10 l/Imp., optional 100 l/Imp.)
- Radio via PDC-radio module:
 - Wireless M-bus (according to OMS)
 - Radio via LPWAN (LoRaWAN™, SIGFOX)



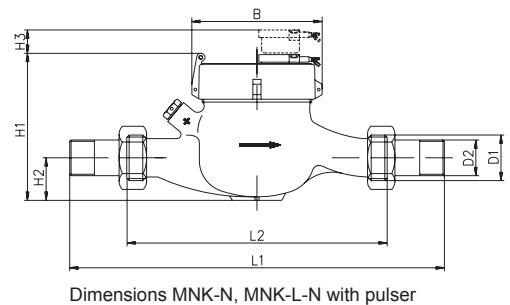
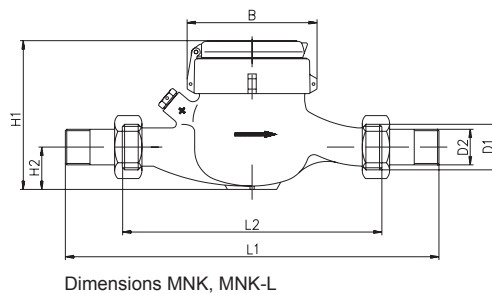


Technical data MNK, MNK-N, MNKI-N										
Permanent flow	Q ₃	m ³ /h	2,5	2,5	2,5	2,5	2,5	4	4	4
Comparable to nominal flow (EWG)	Q _n	m ³ /h	1,5	1,5	1,5	1,5	1,5	2,5	2,5	2,5
Attainable measuring range	Q ₃ /Q ₁	R	200H/50V	200H/50V	200H/50V	200H/50V	200H/50V	200H/80V	200H/80V	200H/80V
Standard measuring range (*)	Q ₃ /Q ₁	R	80H/40V	80H/40V	80H/40V	80H/40V	80H/40V	80H/40V	80H/40V	80H/40V
Comparable to metrological class (EWG)	class		B-H/A-V	B-H/A-V	B-H/A-V	B-H/A-V	B-H/A-V	B-H/A-V	B-H/A-V	B-H/A-V
Overload flow (**)	Q ₄	m ³ /h	3,13	3,13	3,13	3,13	3,13	5	5	5
Minimum flow (**)	Q ₁	l/h	31H/63V	31H/63V	31H/63V	31H/63V	31H/63V	50H/100V	50H/100V	50H/100V
Start-up flow rate	-	l/h	<4	<4	<4	<4	<4	<5	<5	<5
Display range	min	l	0,1	0,1	0,1	0,1	0,1	0,1	0,1	0,1
	max	m ³	99999	99999	99999	99999	99999	99999	99999	99999
Maximum temperature	-	°C	50	50	50	50	50	50	50	50
Operating pressure, max.	MAP	bar	16	16	16	16	16	16	16	16
Pulse value		l/pulse	10/100	10/100	10/100	10/100	10/100	10/100	10/100	10/100
Dimensions:										
Nominal diameter	DN	mm	15	15	20	20	25	20	20	20
		inch	½"	½"	¾"	¾"	1"	¾"	¾"	¾"
Overall length without connectors (*)	L2	mm	110	165/170	130	190	175	130	190	220
Overall length with connectors approx.	L1	mm	190	245/250	226	286	255	226	286	316
Thread meter G x B	D1	inch	¾"	¾"	1"	1"	1 ¼"	1"	1"	1"
Thread connector R x	D2	inch	½"	½"	¾"	¾"	1"	¾"	¾"	¾"
Width approx.	B	mm	95	95	95	95	95	95	95	95
Height (plastic glass) approx.	H1 k*	mm	120	120	120	120	120	120	120	120
Height (mineral glass) approx.	H1 m*	mm	125	125	125	125	125	125	125	125
	H2	mm	~30	~35	~25	~25	~35	~25	~25	~35
	H3	mm	15	15	15	15	15	15	15	15
Weight approx.	-	kg	1,2	1,3	1,3	1,45	1,8	1,3	1,45	1,6

(*) Other measuring ranges (R) and overall lengths on request.

(**) The data refer to the standard measuring range

k* plastic glass (MNK-N, MNKI-N, MNK-L-N) / m* mineral glass (MNK, MNK-L)

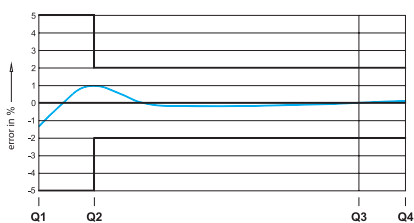




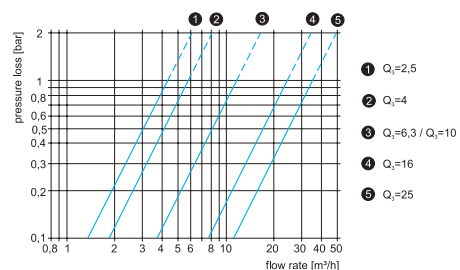
MÄTARKONTROLL



Technical data MNK, MNK-N, MNKI-N									MNK-L, MNK-L-N, MNKI-L-N	
4	6,3	10	10	16	16	25	25	25	2,5	4
2,5	3,5	6	6	10	10	15	15	15	1,5	2,5
200H/80V	200H/80V	200H/80V	200H/80V	200H/63V	200H/63V	160H	160H	160H	200H/50V	200H/80V
80H/40V	80H/40V	80H/40V	80H/40V	80H/40V	80H/40V	80H	80H	80H	80H/40V	80H/40V
B-H/A-V	B-H/A-V	B-H/A-V	B-H/A-V	B-H/A-V	B-H/A-V	B-H	B-H	B-H	B-H/A-V	B-H/A-V
5	7,88	12,5	12,5	20	20	31,3	31,3	31,3	3,13	5
50H/100V	79H/158V	125H/250V	125H/250V	200H/400V	200H/400V	313H	313H	313H	31H/63V	50H/100V
<5	<10	<10	<10	<20	<20	<25	<25	<25	<4	<5
0,1	0,1	0,1	0,1	0,1	0,1	0,1	0,1	0,1	0,1	0,1
99999	99999	99999	99999	99999	99999	99999	99999	99999	99999	99999
50	50	50	50	50	50	50	50	50	30	30
16	16	16	16	16	16	16	16	16	16	16
10/100	10/100	10/100	10/100	10/100	10/100	10/100	10/100	10/100	10/100	10/100
25	25	25	32	40	40	50	50	50	15	20
1"	1"	1"	1 1/4"	1 1/2"	---	2"	---	---	1/2"	3/4"
175	175/260	260	260	300	270	300	270	300	165/170/190	190
293	293/378	378	384	428	---	444	---	---	245/250/270	286
1 1/4"	1 1/4"	1 1/4"	1 1/2"	2"	flange	2 1/2"	flange	flange	3/4"	1"
1"	1"	1"	1 1/4"	1 1/2"	---	2"	---	---	1/2"	3/4"
95	95	95	95	110	110	110	114	114	99	99
120	120	120	120	145	165	145	170	170	115	115
125	125	125	125	150	170	150	175	175	---	120
~35	~35	~40	~40	~50	~70	~60	~75	~75	~30	~30
15	15	15	15	15	15	15	15	15	15	15
1,7	1,7/2,1	2,1	2,2	3,6	7,5	4	9,5	9,5	0,6	0,6



Typical accuracy curve



Typical pressure loss curve